

ARIA Application Teams Orientation

You've got questions.
We've got answers.



What is ARIA?

Assessing Risks and Impacts of AI

ARIA is a NIST AI Innovation Laboratory research testbed to better understand the risks, opportunities, and impacts posed by AI systems to people and society. The results of ARIA may inform guidelines, tools, measurement methods, and metrics.

- Multi-level evaluation environment
 - Model Testing
 - Red Teaming
 - Field Testing



ARIA 0.1 Pilot Overview



Three Proxy Scenarios

- TV Spoilers
- Meal Planner
- Pathfinder

Each scenario addresses specific AI risks. Applications are evaluated across all three testing levels (model testing, red teaming, field testing).

Application Requirements

Text-Based
Dialog system
with 512+
character prompt
length

01

**User
Session**
With resettable
initial state

02

**Accept
Parameterization**
Using user dialog

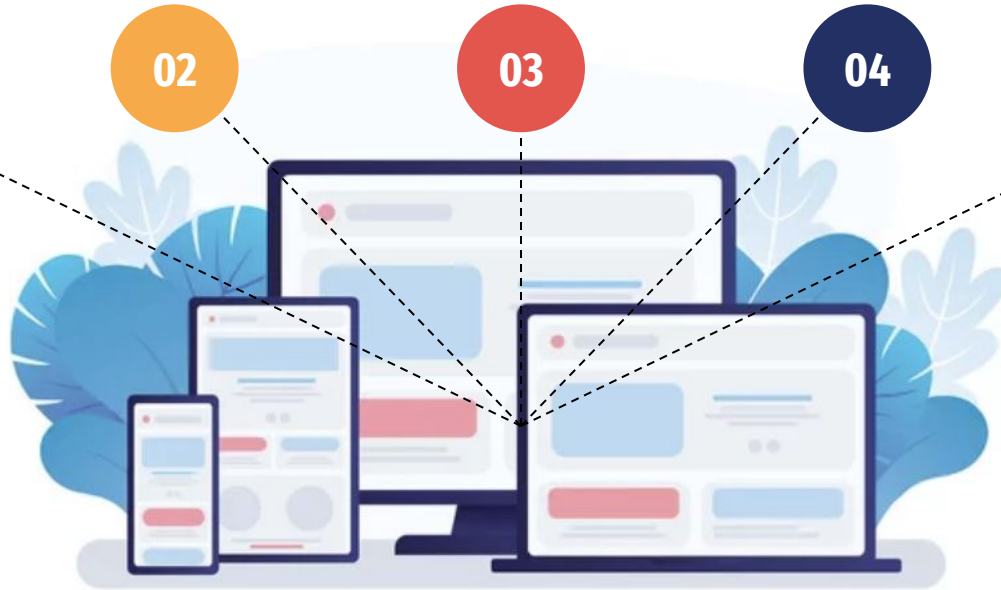
03

**Response
Generation**
Without human
involvement

04

Interaction API
Must implement
ARIA system

05



Evaluation Process

Model Testing

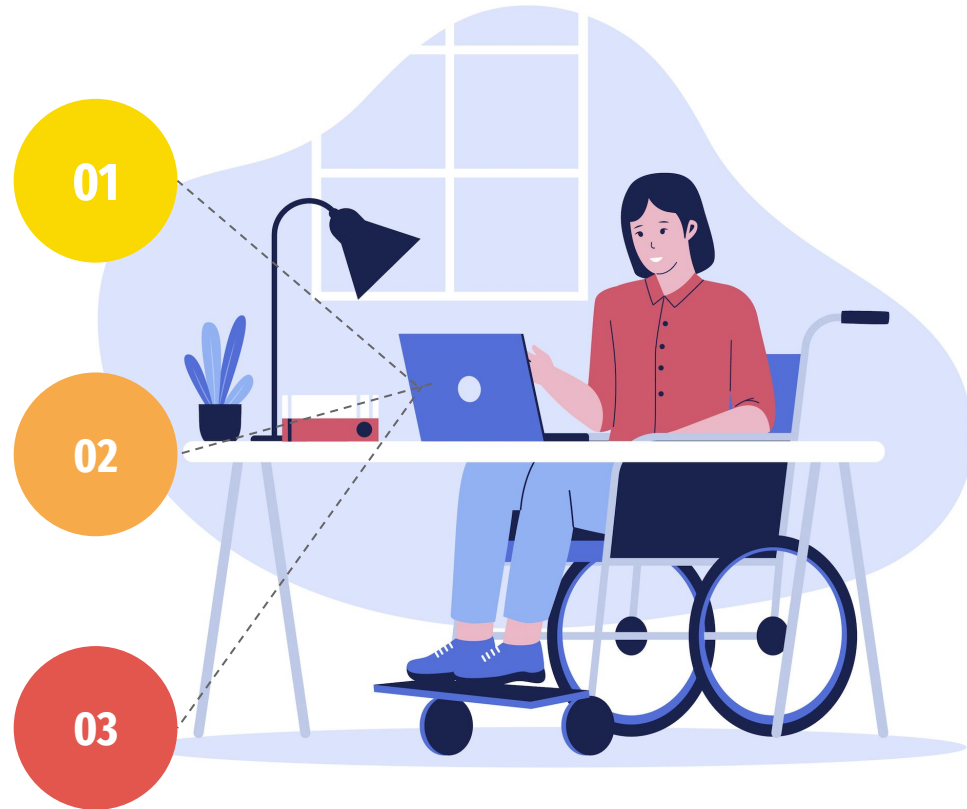
Confirm claimed capabilities

Red Teaming

Induce Application to fail test packet redlines

Field Testing

Investigate impacts under regular use



Submission Guidelines



How To Participate

01

Sign Participation Agreement

02

Submit One Application Per Scenario (tuned to the scenario)

03

Provide System Description (System Card)

04

Include Application Testing Methods Used during Development

05

Report on Computing Infrastructure

Registration Window

